

TTP turns complex technical information into dynamic, visually engaging training materials for the industries that keep the world running. Our [off-the-shelf course catalog](#) features high-quality, 3D-animated computer-based training courses ready for immediate implementation and use. From illustrating the flowpaths of a gas turbine to breaking down the step-by-step procedure for disassembling a valve actuator, ***we visualize things you never thought possible.***

TRAINING PACKAGES DESIGNED TO MEET YOUR NEEDS

Our robust selection of computer-based training (CBT) courses are offered via packages by industry, plant, and/or equipment. Built by our team of subject matter experts, packages are designed to meet the learning outcomes and objectives of plant and training managers whether they manage one site or an entire fleet.

TTP packages include multiple courses. Each course is comprised of one or more topic-based modules aligned with course learning objectives. Most of our CBT courses focus on system process and flows using detailed 3D animations. Courses also cover control screen navigation and familiarization and unit startup and operation.

All courses are self-paced with knowledge assessments after each module. Completion certificates are available after successfully completing each course. Engagement and completion reports are available to supervisors for all users.

Courses can be accessed via the TTP learning management system (LMS) or licensed for use in an existing LMS via AICC.

CBT PACKAGES OVERVIEW

We designed the majority of our CBT packages to be comprehensive operations and maintenance training programs that ensure your team is full prepared to safely perform their job. Packages with 'Essentials' or 'Operations & Maintenance' include all TTP courses relevant to that type of power generation facility.

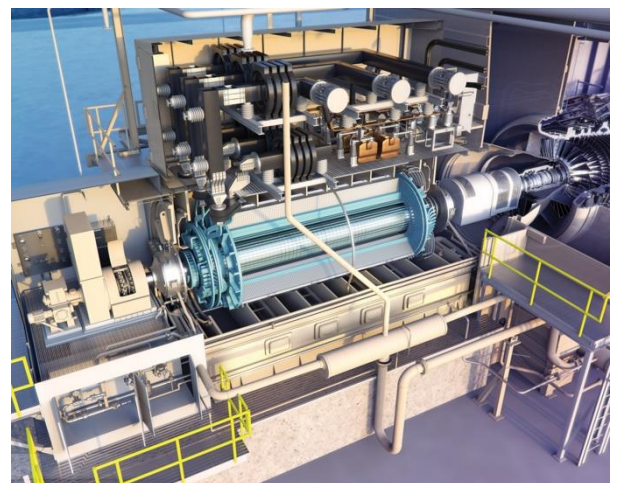
Combined/Simple Cycle Plant CBT Packages

Combined and Simple Cycle Plant packages range from general fundamentals to in-depth operations and maintenance of a variety of OEM gas turbines, steam turbines and HRSGs covering system processes and flows of the plant. Topics include critical valves, circulating water, condenser and condensate, electrical switchgear, electrical distribution, boiler feedwater, reverse osmosis, ZLD, ion exchange and so much more. CC Essentials includes all CC Fundamentals courses.

- Combined Cycle Fundamentals
- Combined Cycle Essentials
 - + Single Set OEM
 - + All Combined Cycle OEM
- Simple Cycle Plant Essentials
 - + Single Gas Turbine OEM
 - + Gas Turbine OEM

Gas Turbine OEM packages allow for direct access to only the OEM gas turbine courses for users who aren't in need of full plant operations and maintenance training.

- Single Gas Turbine OEM
 - + Multiple Gas Turbine OEM
 - + All Gas Turbine OEM



Conventional Plant CBT Packages

While the transition to alternative forms of energy is in full swing, conventional/coal power plants remain the largest source of power generation around the globe. With our conventional power plant packages, you can choose essential fundamentals, specialized processes unique to conventional plants (air quality control and flue gas desulfurization) or in-depth operations and maintenance of the entire plant. Topics include lube oil system, circulating water, condensate and feedwater, electrical switchgear, anhydrous ammonia, dry and wet electrostatic precipitators, CEMS distribution, reverse osmosis, ZLD, ion exchange and so much more. Conventional Plant O&M includes all courses found in the other three conventional plant packages.

- Conventional Plant Fundamentals
- Conventional Plant Operations & Maintenance
- Conventional Power Plant Air Quality Control
- Flue Gas Desulfurization (FGD)

Renewable Power Generation CBT Packages

The growing renewables market presents unique challenges as new technologies require skills and technical knowledge not common in traditional power generation. TTP renewables packages are built on a foundation of fundamentals courses that expand into detailed operations and maintenance; ideal for reskilling/upskilling or training new technicians. Topics include inverters, SCADA, transformers, basic electrical, substation, PV, and much more. Renewable Power O&M includes all TTP renewables courses.



- Battery Energy Storage Operations & Maintenance
- Solar Operations & Maintenance
- Wind Operations & Maintenance
- Renewable Power Operations & Maintenance

General CBT Packages

This selection of CBT packages gathers TTP courses applicable to general plant or chemical manufacturing operations and maintenance, as well as electrical and water treatment courses that are relevant to any industry.

- Chemical Manufacturing Operations & Maintenance
- Electrical Operations & Maintenance
- Plant Operation & Maintenance
- Water Treatment Operations

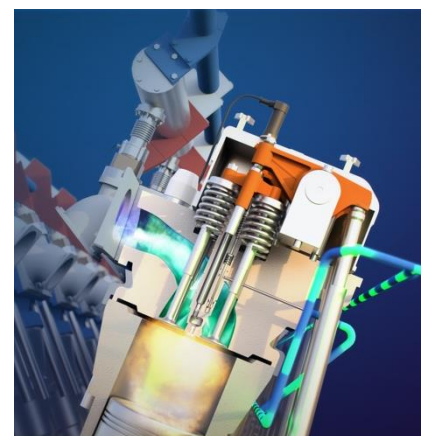
A detailed list of courses included in each package and per user package cost is available later in this document. View all courses in the TTP catalog in a [printable](#) or [interactive digital format](#).

AVAILABLE EQUIPMENT & OEMs IN TTP COURSES

Our CBT packages include courses that feature dozens of different major equipment types, manufacturers, and models including the most common original equipment manufacturers (OEMs) found in the industry. Our library includes:

- **Gas Turbines:** GE 7EA, GE 7FA.02/03/04, GE 7FA.05, GE LM2500, GE LM6000, GE LMS100, Mitsubishi 501GAC, Siemens 501F, Siemens SGT-800, Siemens V84.2
- **Reciprocating Engines:** Wartsila 50SG
- **HRSG:** 2-Drum, 3-Drum
- **Steam Turbines:** GE A10, GE D11, Mitsubishi, Toshiba, Siemens SST6-5000
- **Wind Turbines:** MHI; *Nordex and Vestas planned*

Because many OEM-specific courses are applicable to other OEM models or types, our training may still meet your needs even if your equipment isn't listed. Our in-house subject-matter experts will help identify alternatives.



WORK WITH AN SME TO CREATE CUSTOM LEARNING PATHS FOR YOUR SITE(S)

The best way to customize your training experience with TTP is through creation of Custom Learning Paths (CLPs). CLPs are built from the course package(s) on your subscription and aligned with your equipment, functions, and/or roles. You work with one of our SMEs to select the best package(s) to meet your needs and from the courses within those packages, our SME will build one or more CLPs for individual sites or roles specific to your company.

For example, Company A has 20 operators at three combined cycle sites. Each site has a different gas turbine, steam turbine, and HRSG OEM combination, as well as slight differences in processes, such as one site has a water-cooled condenser while another has an air-cooled condenser. Company A would purchase the Combined Cycle Essentials + All Combined Cycle OEM package and at least 3 CLPs (one for each site).

Users are assigned the CLP that has the exact courses from the package that match their site specifications and learning requirements. While Users will still have access to all content purchased, dedicated CLPs ensure operators and technicians have a clear path for learning the content relevant to their site or qualification requirements.

CLPs can be created for new hires vs. annual learning or specific roles to ensure efficient and targeted training.

INVEST IN TTP FOR HIGH-QUALITY 3D ANIMATED TRAINING

At TTP, we aren't like other CBT companies. We are a small, family-owned and operated business that produces elite industry training with an in-house team of less than 25 people. We do our best to provide competitive pricing while maintaining our white-glove approach and direct access to knowledgeable technical experts.

Our packages-based pricing structure help us expedite activation of training, as well as be more cost-effective by reducing LMS programming and optimizing SME time.

Whether you're a plant manager of an independent site, a training manager for an entire fleet, or an educator looking for material for your classroom – **we will do our best to work within your budget to meet your training needs!**

Annual Subscription Rate & Implementation Fee

All packages are priced on a per user basis as an annual subscription. Package details can be found in CBT Package Course Listing beginning on the next page.

- **Single Package Subscription Rate:** \$350-\$750 per user based on package selected
- **Multiple Package Subscription Rate:** Additional \$100 per user per package added; max \$1,200 per user

All multi-user subscriptions require a one-time, mandatory implementation fee to cover LMS user account creation and setup, custom reporting setup and client onboarding. We also offer AICC, however most customers use the TTP LMS.

- **One-Time Implementation Fee – TTP LMS:** \$1,000-\$2,500 based on number of users
- **One-Time Implementation Fee – AICC:** \$1,500-\$5,000 based on complexity and needs, varies by project

Custom Learning Path Service

Add one or more Custom Learning Paths (CLPs) to build a training plan customized to your site. CLPs are created in coordination with our incredibly knowledgeable SME team to ensure you get the right courses and training program for your needs. We also offer the ability to custom brand the LMS portal which includes a dedicated training portal URL which features your logo and choice of website, RSS feeds, and/or static images to display on the training login page.

- **Custom Learning Path:** One-time fee of \$1,200 for up to 3 CLPs; more than 3 quoted separately
- **Custom Branded LMS Portal:** One-time fee of \$2,500 with quarterly portal landing page updates

GET IN TOUCH TODAY!

Please contact us at CBT@tectrapro.com to learn more about our training and see if you qualify for special pricing.

COMBINED/SIMPLE CYCLE PLANT PACKAGES

Robust packages designed by site type that range from general fundamentals to in-depth operations and maintenance for multiple OEM gas turbines, steam turbines and HRSGs covering system processes and flows of the plant. Topics include critical valves, circulating water, condenser and condensate, electrical switchgear, electrical distribution, boiler feedwater, reverse osmosis, ZLD, ion exchange and so much more.

Combined Cycle Plant Fundamentals

Price Per User: \$350

1. [Combined Cycle Overview](#)
2. [Gas Turbine Fundamentals](#)
3. [Heat Recovery Steam Generator \(HRSG\) Fundamentals](#)
4. [Steam Turbine Fundamentals \(Combined Cycle\)](#)
5. [Generator Fundamentals](#)
6. [Combined Cycle Operation Fundamentals](#)
7. [Basic Electrical Fundamentals](#)



Combined Cycle Plant Essentials

Price Per User: \$425

The Combined Cycle Plant Essentials package includes all seven (7) courses in the Combined Cycle Plant Fundamentals package, as well as the following 28 additional courses.

- | | |
|---|---|
| 1. Cold Start-up | 15. Heat Exchangers |
| 2. Steam System Critical Valves | 16. Bearings |
| 3. Circulating Water System (CC) | 17. Limitorque Actuator |
| 4. Condenser & Condensate (CC) | 18. Laser Alignment |
| 5. Condenser & Condensate (CC with ACC #1) | 19. Boiler Feedwater Pump |
| 6. Condenser & Condensate (CC with ACC #2) | 20. Boiler Feedwater Pump with Hydraulic Coupling |
| 7. Sample Panel | 21. Hydraulic Coupling for Boiler Feedwater Pump |
| 8. Electrical Switchgear | 22. Auxiliary Boiler |
| 9. Electrical Distribution | 23. Cleaver Brooks Auxiliary Boiler |
| 10. Substation Fundamentals | 24. Gas Compressor |
| 11. Substation Safety (In Development) | 25. Reverse Osmosis Fundamentals |
| 12. Medium Voltage Transformer Fundamentals | 26. Ion Exchange System Fundamentals |
| 13. Continuous Emissions Monitoring System (CC) | 27. Zero Liquid Discharge (ZLD) |
| 14. Logic Diagrams | 28. Recycled Water Facility |

The package can be purchased on its own or to include gas turbine, steam turbine and HRSG OEM specific courses as Single Set OEM or All OEM. Both options below include all 35 courses from Combined Cycle Plant Essentials.

CC Plant Essentials + Single Set CC OEM

Price Per User: \$500

- One OEM Gas Turbine and Generator (2-4)
- One OEM HRSG
- One OEM Steam Turbine and Generator

Package includes your choice of one of 10 gas turbine OEMs, one of five HRSG OEMs and one of nine steam turbine OEMs for a total of 37-39 courses.

CC Plant Essentials + All CC OEM

Price Per User: \$750

- All OEM Gas Turbines and Generators (10)
- All OEM HRSGs (5)
- All OEM Steam Turbines and Generators (9)

Package includes all 10 gas turbine OEMs, five HRSG OEMs and nine steam turbine OEMs available in our library for a total of 59 courses.

Simple Cycle Plant Essentials

Price Per User: \$375

The Simple Cycle Plant Package includes the following 15 courses.

1. [Gas Turbine Fundamentals](#)
2. [Generator Fundamentals](#)
3. [Basic Electrical Fundamentals](#)
4. [Electrical Switchgear](#)
5. [Electrical Distribution](#)
6. [Substation Fundamentals](#)
7. [Substation Safety](#) (In Development)
8. [Medium Voltage Transformer Fundamentals](#)
9. [Continuous Emissions Monitoring System-CEMS \(CC\)](#)
10. [Logic Diagrams](#)
11. [Heat Exchangers](#)
12. [Bearings](#)
13. [Laser Alignment](#)
14. [Reverse Osmosis Fundamentals](#)
15. [Ion Exchange System Fundamentals](#)

The package can be purchased on its own or to include gas turbine specific courses as Single GT OEM or All GT OEM. Both options below include all 15 courses from Simple Cycle Plant Essentials.

SC Plant Essentials + Single GT OEM

Price Per User: \$425

One OEM Gas Turbine and Generator (2-4)

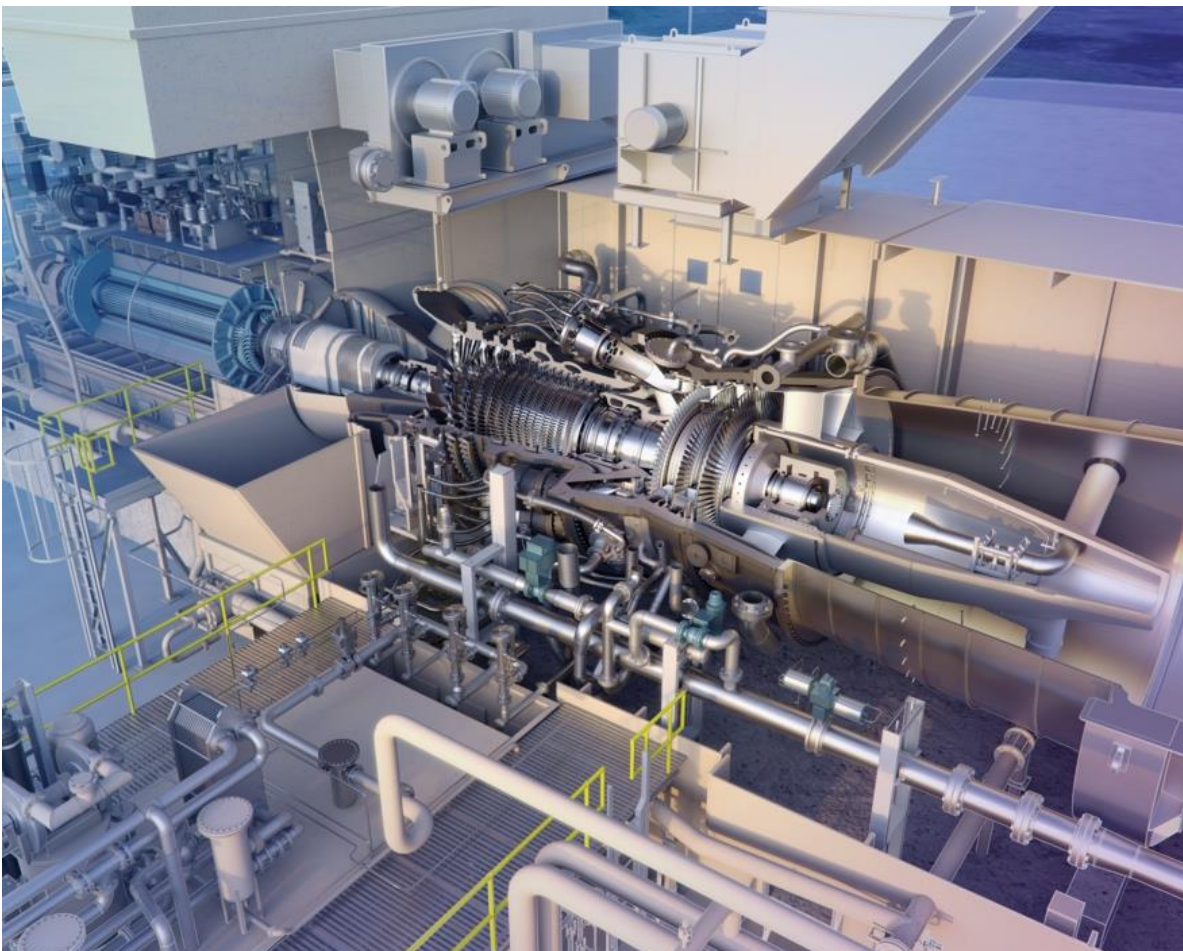
Package includes your choice of one of 10 different gas turbine OEMs for a total of 17-19 courses.

SC Plant Essentials + All GT OEM

Price Per User: \$600

All OEM Gas Turbines and Generators (20)

Package includes all 10 different gas turbine OEMs in our library and includes a total of 34 courses.



OEM Gas Turbine Package Options

The following packages represent the gas turbine options that can be selected to go with the Combined Cycle or Simple Cycle Essentials packages. OEM Gas Turbine Packages can also be purchased on their own.

Single GT OEM

Price Per User: \$350

Package includes all courses for one of 10 different gas turbine OEMs available in our library.

Multiple GT OEM

Price Per User: Add \$50 per OEM to the single OEM GT cost

Package includes all courses for two or more different gas turbine OEMs. Total courses vary based on OEMs selected.

All GT OEM

Price Per User: \$500

Package includes all courses all courses the 10 different gas turbine OEMs available in our library for a total of 27 courses.

OEM	Courses
GE 7FA Gas Turbine	GE 7FA Gas Turbine GE 7FA Gas Turbine Control Screen Familiarization GE 7FA Gas Turbine Generator
GE 7FA.05 Gas Turbine	GE 7FA.05 Gas Turbine GE 7FA.05 Gas Turbine Control Screen Familiarization GE 7FA.05 Gas Turbine Generator
GE 7EA Gas Turbine	GE 7EA Gas Turbine GE 7EA Gas Turbine Control Screen Familiarization GE 7EA Gas Turbine Startup and Shutdown GE 7EA Gas Turbine Generator Overview
GE LM6000 Gas Turbine	GE LM6000 Gas Turbine GE LM6000 Gas Turbine Control Screen Familiarization GE LM6000 Gas Turbine Startup GE LM6000 Gas Turbine Generator Overview
GE LM2500 Gas Turbine	GE LM2500 Gas Turbine GE LM2500 Gas Turbine Generator Overview
GE LMS100 Gas Turbine	GE LMS100 Gas Turbine GE LMS100 Gas Turbine Control Screen Familiarization GE LMS100 Gas Turbine Start GE LMS100 Gas Turbine Generator Overview
Mitsubishi 501GAC Gas Turbine	Mitsubishi 501GAC Gas Turbine Mitsubishi 501GAC Gas Turbine Control Screen Familiarization
Siemens 501F Gas Turbine	Siemens 501F Gas Turbine
Siemens SGT800 Gas Turbine	Siemens SGT800 Gas Turbine Siemens SGT800 Gas Turbine Generator Overview
Siemens V84.2 Gas Turbine	Siemens V84.2 Gas Turbine Siemens V84.2 Gas Turbine Generator Overview

CONVENTIONAL PLANT PACKAGES

While the transition to alternative forms of energy is in full swing, conventional/coal power plants remain the largest source of power generation around the globe. With our conventional power plant packages, you can choose essential fundamentals, specialized processes unique to conventional plants (air quality control and flue gas desulfurization) or in-depth operations and maintenance of the entire plant. Topics include lube oil system, circulating water, condensate and feedwater, electrical switchgear, anhydrous ammonia, dry and wet electrostatic precipitators, CEMS distribution, reverse osmosis, ZLD, ion exchange and so much more.

Conventional Plant Fundamentals

Starting Price Per User: \$350

1. [Conventional Boiler Fundamentals Overview](#)
2. [Boiler Fundamentals](#)
3. [Flue Gas Fundamentals](#)
4. [Steam Turbine Fundamentals \(Conventional Boiler\)](#)
5. [Generator Fundamentals \(Conventional Boiler\)](#)
6. [Conventional Boiler Plant Operation Fundamentals](#)
7. [Basic Electrical Fundamentals](#)



Conventional Plant Operations & Maintenance

Price Per User: \$500

The Conventional Plant Operations and Maintenance Package includes all seven (7) courses in the Conventional Plant Fundamentals Package, as well as the following 35 essentials courses.

- | | | |
|--|--|---|
| 1. Coal Pulverizer | 11. Dry Electrostatic Precipitators | 23. Continuous Emissions Monitoring System (CP) |
| 2. Lube Oil System (Conventional Plant) | 12. Wet Electrostatic Precipitators | 24. Logic Diagrams |
| 3. Condensate & Feedwater Systems (Conventional Plant) | 13. Induced Draft Fans | 25. Heat Exchangers |
| 4. Circulating Water System (Conventional Plant) | 14. FGD Lime Slaking System Startup and Operation | 26. Bearings |
| 5. Electrical Switchgear | 15. FGD Absorber | 27. Limitorque Actuator |
| 6. Rotary Screw Air Compressor | 16. FGD Absorber Startup | 28. Rexa Actuators |
| 7. Air Quality Control System Overview | 17. FGD Lime Slurry Production | 29. Laser Alignment |
| 8. Anhydrous Ammonia System | 18. FGD Lime and Absorber Control Screen Familiarization | 30. Auxiliary Boiler |
| 9. Hydrated Lime | 19. Flue Gas Mercury Removal | 31. Cleaver Brooks Auxiliary Boiler |
| 10. Wet FGD | 20. Baghouse System | 32. Reverse Osmosis Fundamentals |
| | 21. Baghouse Control Screen Familiarization | 33. Ion Exchange System Fundamentals |
| | 22. Baghouse Startup | 34. Zero Liquid Discharge (ZLD) |
| | | 35. Recycled Water Facility |

In addition, the package includes the following six (6) steam turbine, steam turbine generator and boiler equipment type and OEM specific courses available in our library. In total, the package includes 48 courses.

- | | |
|--|---|
| 1. Boiler (Subcritical) | 4. GE Generator for Tandem-Compound Steam Turbine |
| 2. Furnace (Supercritical) | 5. GE Steam Turbine Expansion |
| 3. GE Conventional Plant Steam Turbine Generator | 6. GE Tandem-Compound Reheat Steam Turbine |

Flue Gas Desulfurization (FGD) Package

The Flue Gas Desulfurization (FGD) package includes all courses associated with the removal of Sulphur from the flue gas of a coal-fired power plant. This includes a detailed description of the design and operation of an absorber.

Price Per User: \$350

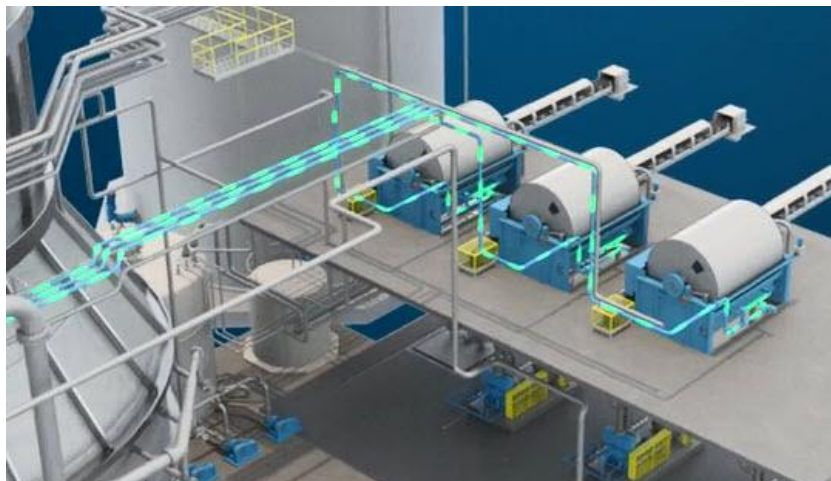
1. [Hydrated Lime](#)
2. [Wet Flue Gas Desulfurization](#)
3. [Flue Gas Desulfurization \(FGD\) Absorber](#)
4. [Flue Gas Desulfurization Absorber Startup](#)
5. [Flue Gas Desulfurization Lime Slurry Production](#)
6. [Flue Gas Desulfurization Lime and Absorber Control Screen Familiarization](#)
7. [Flue Gas Desulfurization Lime Slaking System Startup and Operation](#)
8. [Induced Draft \(ID\) Fans](#)

Conventional Plant Air Quality Control

The Conventional Plant Air Quality Control package includes all courses associated with the removal of unwanted constituents from the flue gas of a coal-fired power plant. This includes a detailed description of the design and operation of an absorber, electrostatic precipitators (dry and wet), mercury removal, baghouse, and CEMS.

Price Per User: \$400

1. [Air Quality Control System Overview](#)
2. [Anhydrous Ammonia System](#)
3. [Hydrated Lime](#)
4. [Wet Flue Gas Desulfurization](#)
5. [Dry Electrostatic Precipitators](#)
6. [Wet Electrostatic Precipitators](#)
7. [Induced Draft Fans](#)
8. [Flue Gas Desulfurization \(FGD\) Absorber](#)
9. [Flue Gas Desulfurization Absorber Startup](#)
10. [Flue Gas Desulfurization Lime Slurry Production](#)
11. [Flue Gas Desulfurization Lime and Absorber Control Screen Familiarization](#)
12. [Flue Gas Desulfurization Lime Slaking System Startup and Operation](#)
13. [Flue Gas Mercury Removal](#)
14. [Baghouse System](#)
15. [Baghouse Control Screen Familiarization](#)
16. [Baghouse Startup](#)
17. [Continuous Emissions Monitoring System \(CEMS\) Conventional Plant](#)



RENEWABLE POWER GENERATION PACKAGES

The growing renewables market presents unique challenges as new technologies require skills and technical knowledge not common in traditional power generation. TTP renewables packages are built on a foundation of fundamentals courses that expand into detailed operations and maintenance; ideal for reskilling/upskilling or training new technicians. Topics include inverters, SCADA, transformers, basic electrical, substation, PV, and much more.

Battery Energy Storage Systems O&M

Price Per User: \$600

1. [Basic Electrical Fundamentals](#)
2. [Battery Energy Storage System Fundamentals](#)
3. [Inverter Fundamentals](#)
4. [Maintenance Testing](#) (In Development)
5. [Medium Voltage Transformer Fundamentals](#)
6. [Renewable Interconnect/Substation Facility](#)
7. [Substation Fundamentals](#)
8. [Substation Safety](#) (In Development)
9. [SCADA Fundamentals](#) (Planned)
10. [Fault Protection Relays](#) (Planned)

Solar Operations & Maintenance

Price Per User: \$650

1. [Basic Electrical Fundamentals](#)
2. [Battery Energy Storage System Fundamentals](#)
3. [Inverter Fundamentals](#)
4. [Maintenance Testing](#) (In Development)
5. [Medium Voltage Transformer Fundamentals](#)
6. [Renewable Interconnect/Substation Facility](#)
7. [Solar Generation Facility](#)
8. [Substation Fundamentals](#)
9. [Substation Safety](#) (In Development)
10. [SCADA Fundamentals](#) (Planned)
11. [Fault Protection Relays](#) (Planned)

Wind Operations & Maintenance

Price Per User: \$550

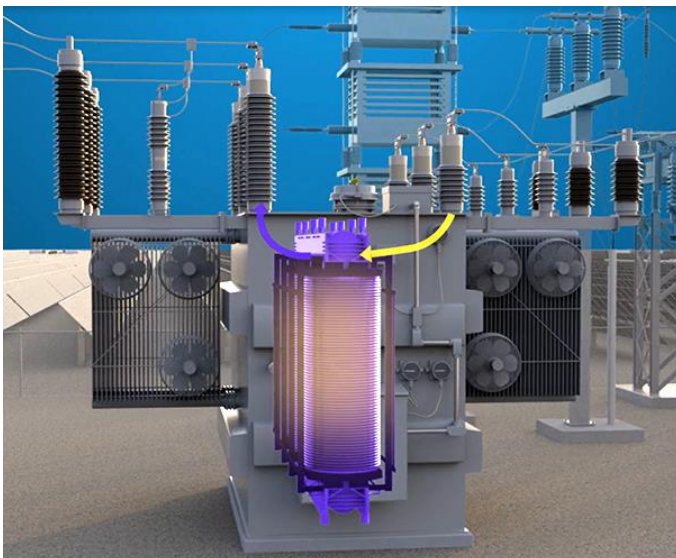
1. [Basic Electrical Fundamentals](#)
2. [Maintenance Testing](#) (In Development)
3. [Medium Voltage Transformer Fundamentals](#)
4. [Renewable Interconnect/Substation Facility](#)
5. [Substation Fundamentals](#)
6. [Substation Safety](#) (In Development)
7. [Wind Turbine Generator](#)
8. [SCADA Fundamentals](#) (Planned)
9. [Fault Protection Relays](#) (Planned)

Renewable Operations & Maintenance

Includes all TTP renewable power generation courses.

Starting Price Per User: \$750

1. [Basic Electrical Fundamentals](#)
2. [Battery Energy Storage System Fundamentals](#)
3. [Inverter Fundamentals](#)
4. [Maintenance Testing](#) (In Development)
5. [Medium Voltage Transformer Fundamentals](#)
6. [Photovoltaic Fundamentals](#)
7. [Renewable Interconnect/Substation Facility](#)
8. [Solar Generation Facility](#)
9. [Substation Fundamentals](#)
10. [Substation Safety](#) (In Development)
11. [Wind Turbine Generator](#)
12. [SCADA Fundamentals](#) (Planned)
13. [Fault Protection Relays](#) (Planned)



OTHER TRAINING PACKAGES

Chemical Manufacturing Operations & Maintenance

Covers courses associated with systems associated with a chemical plant. This includes ammonia plant, basic electrical fundamentals, reverse osmosis, ion exchange, electronic deionization (EDI) system, zero liquid discharge, recycled water facility, electrical switchgear, heat exchangers, bearings, laser alignment, and Limitorque actuators.

Price Per User: \$500

1. [Ammonia Plant](#)
2. [Basic Electrical Fundamentals](#)
3. [Reverse Osmosis Fundamentals](#)
4. [Ion Exchange System Fundamentals](#)
5. [Water Treatment Plant \(Reverse Osmosis w/EDI Modules\)](#)
6. [Zero Liquid Discharge \(ZLD\)](#)
7. [Recycled Water Facility](#)
8. [Maintenance - Electrical Switchgear](#)
9. [Heat Exchangers](#)
10. [Bearings](#)
11. [Laser Alignment](#)
12. [Limitorque Actuator](#)
13. [Auxiliary Boiler](#)

Water Treatment Operations

Covers courses associated with plant water treatment systems. This includes reverse osmosis, ion exchange, electronic deionization (EDI) system, zero liquid discharge, and recycled water facility.

Price Per User: \$350

1. [Reverse Osmosis Fundamentals](#)
2. [Ion Exchange System Fundamentals](#)
3. [Water Treatment Plant \(Reverse Osmosis w/EDI Modules\)](#)
4. [Zero Liquid Discharge \(ZLD\)](#)
5. [Recycled Water Facility](#)

Electrical Operations & Maintenance

All courses associated with electrical operations and maintenance including basic electrical fundamentals, detailed operation of electrical distribution and switchgear, circuit breaker maintenance, a description of an interconnect (substation) facility, substation fundamentals and operations, medium voltage transformers, maintenance testing, inverter fundamentals and the detailed operation of a battery energy storage system (BESS).

Price Per User: \$500

1. [Basic Electrical Fundamentals](#)
2. [Electrical Distribution](#)
3. [Electrical Switchgear](#)
4. [Substation Fundamentals](#)
5. [Substation Operations](#) (In Development)
6. [Medium Voltage Transformer Fundamentals](#)
7. [Maintenance Testing](#) (In Development)
8. [MagneBlast 4160V Breaker](#)
9. [Renewable Interconnect/Substation Facility](#)
10. [Inverter Fundamentals](#)
11. [Battery Energy Storage System Fundamentals](#)
12. [Generator Fundamentals \(CC/SC\)](#)
13. [Generator Fundamentals \(Conventional\)](#)

Plant Operations & Maintenance

This package covers a variety of courses associated with the maintenance and operations of a power plant. This includes heat exchangers, REXA actuators, bearings, laser alignment, logic diagrams, Limitorque actuator, boiler feed pump and hydraulic coupling for a boiler feed pump.

Price Per User: \$350

1. [Heat Exchangers](#)
2. [REXA Actuators](#)
3. [Bearings](#)
4. [Laser Alignment](#)
5. [Logic Diagrams](#)
6. [Boiler Feedwater Pump](#)
7. [Limitorque Actuator](#)
8. [Boiler Feedwater Pump with Hydraulic Coupling](#)
9. [Hydraulic Coupling for Boiler Feedwater Pump](#)
10. [Electrical Switchgear](#)